

# BTDC™

## BITRODE DIGITAL CYCLER™



Bitrode Digital Cycler™ (BTDC™) is the ultimate battery testing solution, designed specifically for high-capacity cells, with exceptional performance specifications and regenerative capabilities.

### Key Features

- Up to 28 channels of 300 A continuous current
- Data acquisition rate of 1 ms
- Rise time (current): <0.7ms
- Voltage accuracy: 0.015% of full scale (FS)
- Current accuracy: 0.02% of full scale (FS)
- Regenerative
- Max current per module: 1200 A
- Available voltage ranges: -6 to +6 volts
- High (single bay) circuit density
- Available max current rates: 100 / 300 / 600 A
- Voltage control resolution: 0.1 mV
- Circuit-circuit isolation
- Slew rate (current): less than 1 ms (-90 to +90%)
- 100% duty cycle at max power

Made in the USA.

### BTDC™ Configurations

	No. of Channels	Max Current	Max Voltage	Current Resolution
Configuration 1	4	300/30 A (450 A*)	-6 to +6 V	5mA
Configuration 2	2	600/60 A (900 A*)	-6 to +6 V	10mA
Configuration 3	4	100/10 A (150 A*)	-6 to +6 V	2mA

\*150% Pulsing for up to 30 seconds can be added as an option.

Up to 7 modules of different configurations can be combined in the same cabinet (up to 3 in small cabinet).

HMI can be added if needed for the application.

Second current range for increased control and measurement accuracy.

### BITRODE HEADQUARTERS

9787 Green Park Industrial Drive  
St. Louis, Missouri 63123 - USA

t +1 636 343-6112

f +1 636 343-7473

e info@bitrode.com

[www.bitrode.com/btdc](http://www.bitrode.com/btdc)

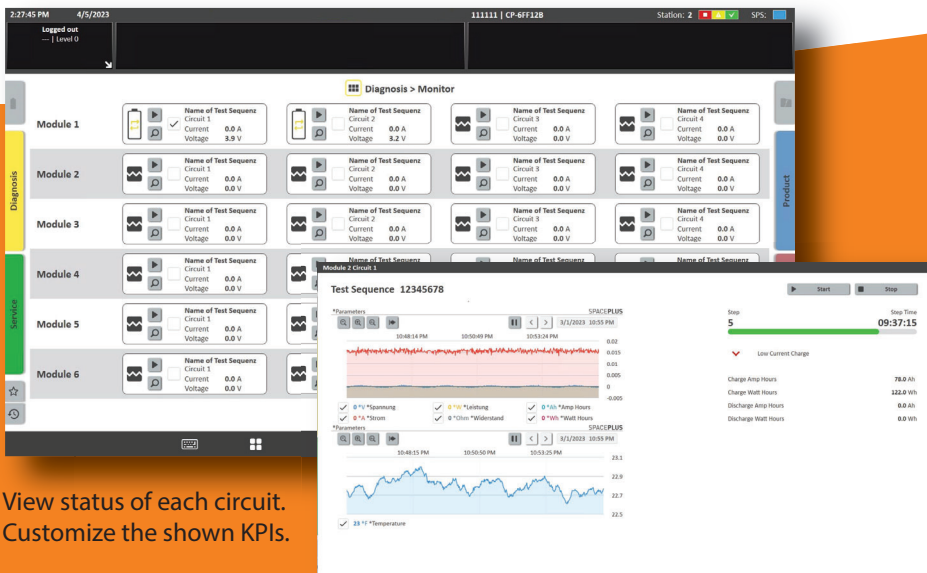
Height 189 cm/78"  
Width 61 cm/24"  
Depth 122 ccm/48"



## HMI touchscreen

- Uses Schuler architecture
- Choose from standard tests
- Define recipe steps
- View status of each circuit
- Customize the shown KPIs
- Graph the results of a circuit

Height 107 cm/42"  
Width 61 cm/24"  
Depth 122 ccm/48"



View status of each circuit.  
Customize the shown KPIs.

## Additional Features

- In-depth diagnostic capability
- CE (UL, CSA upon request)
- Open communication architecture customizable as needed to connect to:
  - Existing automation infrastructure
  - External and third-party I/O modules
  - Environmental chambers
  - Third-party software

Graph the results of a circuit.

**SCAN**



**HERE**

### BITRODE HEADQUARTERS

9787 Green Park Industrial Drive  
St. Louis, Missouri 63123 - USA

t +1 636 343-6112

f +1 636 343-7473

e info@bitrode.com

[www.bitrode.com/btdc](http://www.bitrode.com/btdc)

All specifications are preliminary and subject to change.